



# Knit Picks®

MARCH 2021

KnitPicks.com | 1.800.574.1323

## NEW PATTERN COLLECTION

---

### TRAVERSE: CABLED ACCESSORIES

13 cabled  
patterns

*pages 2-5*

### MERINO YARN!

featuring yarns in every  
price point

*pages 6-7, 20-21*

### SPECIAL PROMO!

Save 20% on one item

*See back cover for  
more information!*

*Project shown:  
Salisbury Scarf 52941D.*

- A. ORNE HAT {52930D} Knit in Wool of the Andes Tweed. Yarn cost starts at \$9.98.  
B. ICICLE TWIST SOCKS {52933D} Knit in Stroll Tweed. Yarn cost starts at \$13.98.  
C. IRISH IVY HAT {52935D} Knit in Stroll. Yarn cost starts at \$11.98.  
D. SIDEWINDER HAT {52939D} Knit in Wool of the Andes Superwash Bulky. Yarn cost starts at \$8.99.  
E. V CABLE COWL {52937D} Knit in Gloss. Yarn cost starts at \$11.98.  
F. FIORD BEANIE {52938D} Knit in Wool of the Andes. Yarn cost starts at \$6.98.



A



B



# Traverse

## Cabled Accessories

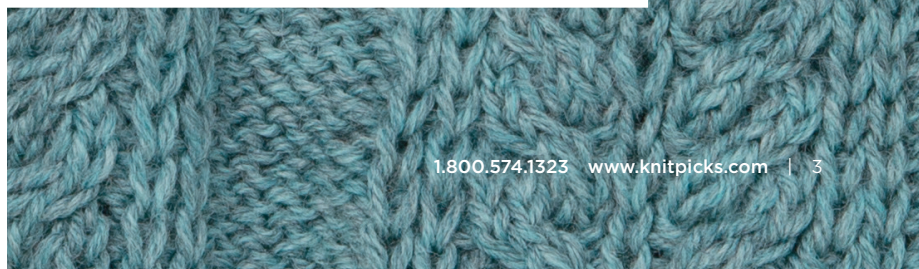
by Knit Picks

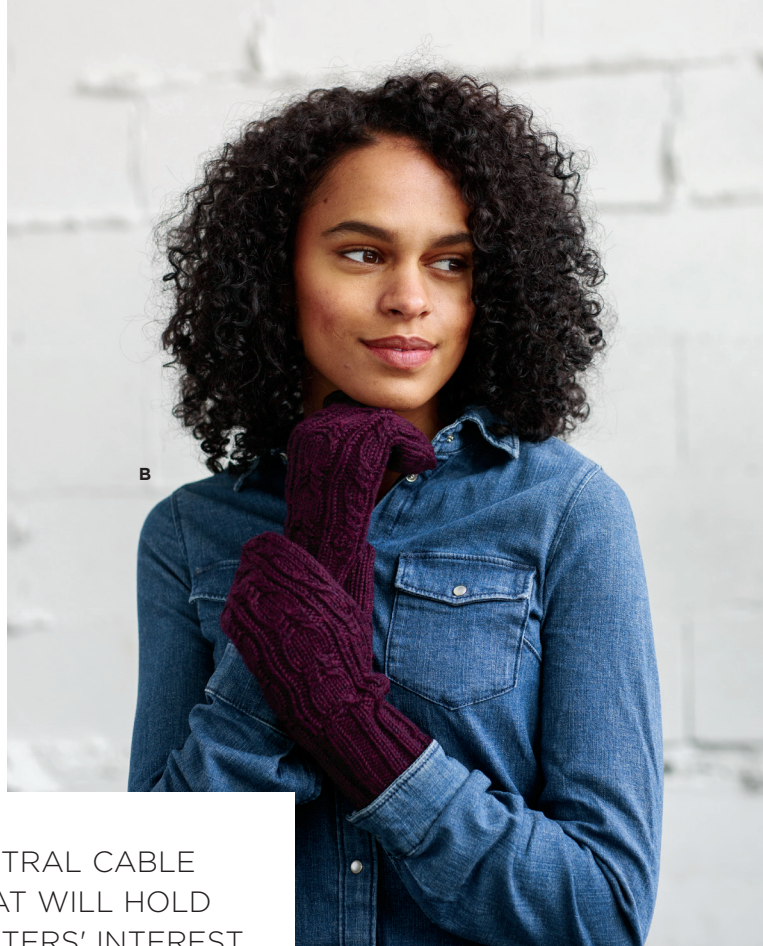
This collection of gender-neutral accessories is everything a cable-loving knitter could hope for, providing an extensive selection of hats, mittens, and scarves in an assortment of simpler to complex cables. With the variety of knits and cable types, these patterns will hold the interest of advanced knitters and act as excellent level up skill builders for knitters newer to cables.

*Printed Book {33865} \$23.99 save 20%*

*eBook {75369D} \$14.99*

*Individual Pattern Download \$4.99*





GENDER-NEUTRAL CABLE PATTERNS THAT WILL HOLD ADVANCED KNITTERS' INTEREST AND ARE EXCELLENT SKILL BUILDERS FOR KNITTERS NEW TO CABLES.



- A. FORGE SCARF {52934D}** Knit in Wool of the Andes Sport. Yarn cost starts at \$17.45.
- B. COMFORT MITTENS {52929D}** Knit in Twill. Yarn cost starts at \$12.99.
- C. DIAMOND DREAM MITTENS {52932D}** Knit in Palette. Yarn cost \$7.98.
- D. HONEYCOMB HAT {52931D}** Knit in Provincial Tweed. Yarn cost \$12.99.
- E. NOUVEAU HAT {52940D}** Knit in City Tweed DK. Yarn cost \$13.98.

E





Featured  
**YARNS  
FROM**

**Traverse**  
Cabled Accessories  
by Knit Picks

**STROLL™**

**Fingering**

75% Fine Superwash Merino Wool, 25% Nylon.

\$5.99/50g ball - 231 yds.

**Why we love it:** Warm, cushy, and versatile, this is the yarn to have in your stash when sock (or shawl!) inspiration strikes. High-grade Merino wool and nylon blend into one of our most useful yarns, with beautiful drape and next-to-skin softness that shows off texture, lace, and cables equally well. Try them all to find your favorite variation!

*Color shown: Everglade Heather 2560Z.*

*Project shown: Irish Ivy Hat 52935D.*

**WOOL OF THE ANDES™ TWEED**

**Worsted**

80% Peruvian Highland Wool, 20% Donegal Tweed.

\$4.99/50g skein - 110 yds.

**Why we love it:** Wool of the Andes Tweed gives you a whole new way to introduce texture to your handknits. Our tweed combines a classic palette with earthy-colored flecks of donegal tweed, viscose neps suspended in a very fine acrylic that allows them to be spun alongside the wool fibers. The tweedy donegal neps add a rustic and traditional appeal to everything from Aran sweaters and cabled outerwear to outdoorsy hats and mitts.

*Color shown: Sea Glass Heather 28298.*

*Project shown: Orne Hat 52930D.*



## GLOSS™

### Lace, Fingering & DK

70% Merino Wool, 30% Silk.

L: \$7.99/50g hank - 440 yds.

F: \$7.99/50g hank - 220 yds.

DK: \$7.99/50g ball - 123 yds.

**Why we love it:** The perfect blend of lofty Merino and lustrous silk! Next-to-skin soft, Gloss's subtle sheen highlights each stitch and yarnover for crisp stitch definition. Gloss results in garments and accessories with soft, easy drape and relaxes after blocking for a soft fabric.

Color shown: Wharf Fingering 28596.

Project shown: V Cable Cowl 52937D.

## WOOL OF THE ANDES™

### Sport, Worsted & Bulky

100% Peruvian Highland Wool.

S: \$3.49/50g skein - 137 yds.

W: \$3.49/50g skein - 110 yds.

B: \$5.99/100g hank - 137 yds.

**Why we love it:** For the sweater you'll wear a thousand times, our classic worsted wool yarn is spun and plied carefully to achieve a wonderfully balanced twist.

Color shown: Fjord Heather Worsted 25647. Project shown: Fjord Beanie 52938D.

## SWISH™

### DK, Worsted & Bulky

100% Superwash Fine Merino Wool.

DK: \$5.99/50g skein - 123 yds.

W: \$5.99/50g skein - 110 yds.

B: \$10.99/100g hank - 137 yds.

**Why we love it:** Swish is the superwash of knitters' dreams! Made with Merino, machine washable wool has never been so touchably soft.

Color shown: Delft Heather DK 24312.

Project shown: Salisbury Scarf 52941D.

# JOURNAL YOUR WAY THROUGH YOUR WIPS

**Whether you're starting a new project or planning your next, our journals will keep you organized and knitting in style!**

The act of knitting is a deeply personal and creative one. With long lengths of yarn, needles, and pattern in hand, we spend hours, weeks, months, and even years making for ourselves and loved ones. Whether alone or with friends, around those moments and projects a great deal of life happens, too. Alongside your notes on gauge and needle size, gather your project's memories and store them for future reflection. Keep it handy in your knitting bag or close by your favorite knitting chair. We're sure you'll be very glad you did.

Shown, from bottom left: Zephyr Lay-Flat Small Notebook {84426} \$4.79, Collage Sketchbook {84424} \$11.99, Tangent Lay-Flat Small Notebook {84425} \$5.99, Knitter's Journal {33748} \$19.99, Meow Meow Ring Bound Notebook {84423} \$14.99, and Basic Chart Keeper - Silver {84028} \$11.99.



Keep track of your knitting progress with this sleek & chic compact journal! Part workbook, part reference guide, it's the journal no knitter should be without!

# KNITTER'S JOURNAL

## Glossary

**Slipped Stitches**  
The slip stitches are wrong

**Slip Stitch (MIL)**

**Make 1 Left-Leaning**

**2.1 Right-Leaning**

**Exit (35K)**

100

10



	BUST/CHEST	
BACK/WAIST		

POP OR WAIST

Page 10 of 10

1



# EMENTS

### MEASUREMENT

is important for good fit. Measurements, and hold the measuring tape head, just above the eyebrows, of the chest

Measure around forehead around the fullest part of the head. Pulling the tape too tightly.

Measure at the narrowest point above the belly button.

Measure around the upper arm, slightly above the elbow.

measure from a  
feet hip-width apart

all your help

1.800.5

## Project log

## Measurement Guide

Measure around the fullest part of the chest, just below the armpits. Keeping the tape level and parallel to the floor, pull the tape snug, but not tight. Do not pull the tape over the shoulders.

Measure the distance from the narrowest part of the chest to the belly button.

Head \_\_\_\_\_ Measure slightly above \_\_\_\_\_ around the upper \_\_\_\_\_ to wrist.

Measure of... from airport... apart, n

Water Supply

...around the

1.800.57

1.800.37

# PUT A POM ON IT

Pom-poms—the crafter's equivalent of putting a cherry on top.  
Visit [knitpicks.com](http://knitpicks.com) for our full selection of pom-poms



watch now

Hover your phone  
camera over the QR code to watch a  
video about our faux fur pom-poms.



PINKS 12CM SET OF THREE 84895 - \$9.99



NEUTRALS 12CM SET OF THREE 84893 - \$9.99



NEUTRALS 8CM SET OF FIVE 84892 - \$12.99



BLUES 12CM SET OF THREE 84894 - \$9.99



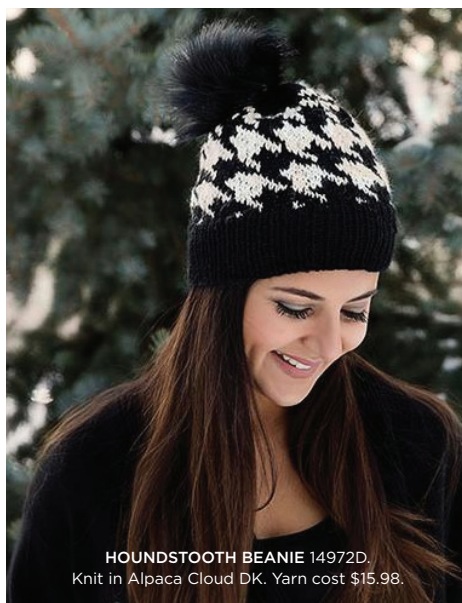
GREYS 12CM SET OF THREE 84896 - \$9.99



WARM TONES 8CM SET OF FIVE 84891 - \$12.99



**XOXO BEANIE 13975D.**  
Knit in Wonderfluff. Yarn cost \$26.97.



**HOUNDSTOOTH BEANIE 14972D.**  
Knit in Alpaca Cloud DK. Yarn cost \$15.98.



**HEART OF HEARTS HAT 14944D.**  
Knit in Gloss DK. Yarn cost starts at \$15.98.



**SWOOP BEANIE 56081.**  
Knit in Chroma Twist Bulky. Yarn cost starts at \$23.98.

## PATTERNS FOR POM-POMS

Add that perfect pop of color to your hats, blankets, and scarves with these playful faux-fur poms.



**EASY CABLES HAT 15224D.**  
Knit in Wool of the Andes Superwash Bulky.  
Yarn cost starts at \$8.99.



**TRIANGLES POM-POM BLANKET 52609D.**  
Knit in Mighty Stitch. Yarn cost \$29.94.



**MODERN TOQUE 15229D.**  
Knit in Swish DK. Yarn cost starts at \$17.97.



**FAWNED 13422D.**  
Knit in Wool of the Andes Superwash.  
Yarn cost \$19.96.

WE NOW CARRY

## GERMANTOWN YARN BY KELBOURNE WOOLENS



12 FREE PATTERNS! ONE-SKEIN HAT PATTERNS FROM KELBOURNE WOOLENS

JANUARY HAT {56237}



FEBRUARY HAT {56238}



MARCH HAT {56239}



APRIL HAT  
{56240}



An icon of American craft, Kelbourne Woolen's Germantown yarn was developed in Philadelphia in the early 1800s, and the name has come to be synonymous with good quality worsted yarn. Germantown yarn is made in the US using 100% US grown wool. Kelbourne Woolens is proud to be a part of Germantown's long history of American crafting. To see the full range of 24-colors hover your phone camera over the QR code!

**Worsted** | 100% US Grown Wool. \$15.00/100g skein - 220 yds.



# STROLL TWEED

**A super-soft, affordable,  
machine washable treat!**

Stroll Tweed's rich, solid colors show off texture, lace, and cables beautifully. The neutral neps of tweed add flecks of interest to simple stitches and textured knits, but are subtle enough to accentuate rather than interfere with all but the most complex patterns. With merino softness and Donegal depth, this easy care sock yarn is a terrifically tweedy treat for any project.

**Fingering** | 65% Fine Superwash Merino  
Wool, 25% Nylon, 10% Donegal Tweed  
\$6.99/50g skein - 231 yds.

**See more**

[cable accessory  
patterns on page 2-5](#)



**ICICLE TWIST SOCKS {52933D}**  
Knit in Stroll Tweed. Yarn cost \$13.98.





**MISTY MORN {14191D}**  
Knit in Stroll Tweed.  
Yarn cost starts at \$55.92.



**CHATTER LANE SOCKS {52682D}**  
Knit in Stroll Tweed. Yarn cost starts at \$27.96.



**MICHELINA SHAWL {52808D}**  
Knit in Stroll Tweed. Yarn cost \$20.97.



**GLEN COTTAGE COWL {52706D}**  
Knit in Stroll Tweed. Yarn cost \$13.98.

Shown, from left: Barn Door Heather 26297, Garnet Heather 26283, Firecracker Heather 26288, Persimmon 27233, Barley Heather 28194, Dill Heather 26292, Forest Heather 26298, Sequoia Heather 26293, Lost Lake Heather 26295, Atlantis Heather 28192, Marine Heather 26290, and Lapis 28189.



# HAWTHORNE

**A classic high twist sock yarn in  
exquisite, hand-painted colors.**

Hawthorne is the perfect mix-and-match yarn for fade, striped, or ombré projects. Originally designed as the very best sock yarn, it's also our go-to yarn family for shawls and sweaters that will look good for years to come! Each skein features a tight but bouncy ply which means that each stitch has excellent definition, no matter how many times your projects are washed in the machine.

**Fingering** | 80% Fine Superwash Highland Wool, 20% Polyamide.  
\$13.99/100g hank - 357 yds.

**Shown from top, clockwise:** Ashland Tonal 27410, Sweet Home Tonal 27409, Kerns 27423, Arleta 27413, Newport Tonal 27407, Midwinter Kettle 28623, Abernathy 26863, Springwater 27422, and Vancouver 26428. **Project Shown:** Sorrel {14824D} Knit in Hawthorne & Aloft. **Tools Shown:** Cedar Box - Small {82367} \$12.99, Majestic needle tips, Knit Picks Zippered Pouch - Mauve & Plum {84287} \$8.99.



## SPECKLE

Bright sprinklings and unexpected pops of color add surprise to simple stitch patterns.

*Color: Blueberry Speckle 27219.*

*Project: Kempii Shawlette 55982, yarn cost \$27.98.*



## TONAL

Subtle, shifting shades for rich and sophisticated projects.

*Color: Eugene Tonal 27403.*

*Project: Helix Wiggles Socks 52659D, yarn cost starts at \$27.98.*



## MULTI

Pools and pops of vibrant colors on washes of shifting tones; each skein is unique!

*Color: Alameda 26429.*

*Project: Stratosphere 52360D, yarn cost \$41.97.*



## KETTLE

Variations in tone add depth and a handcrafted touch, perfect for lightly textured stitches.

*Color: Northstar Kettle 28622.*

*Project: Bakewell Socks 52394D, yarn cost starts at \$27.98.*





# MUSE™

## SOCK YARN

Hand-painted by Japanese artisans, each skein of this gorgeous sock yarn is a carefully curated **EXPLOSION of chromatic colors!**

Muse sock yarn is a soft blend of fibers, making this a yarn that is next-to-skin soft yet durable. Although designed as a sock yarn, Muse is also wonderful in shawls and lightweight cardigans as well! With machine washable convenience, Muse Sock Yarn makes it easy to enjoy a whole closet full of garments and accessories just bursting with color.

**Fingering** | 75% Fine Superwash Merino Wool, 25% Nylon.  
\$15.99/100g hank - 423 yds.



IMAGINATION COWL 50725 - Knit in Muse Hand Painted Sock Yarn. Yarn cost \$31.98.



DANCE OF THE HONEYBEES SOCKS 14784D - Knit in Muse Hand Painted Sock Yarn. Yarn cost starts at \$15.99.



OTTILIE SHAWL: LIGHT 52844D - Knit in Muse Hand Painted Sock Yarn. Yarn cost \$31.98.



RITA M SHAWL 14032D - Knit it in Muse Hand Painted Sock Yarn. Yarn cost starts at \$47.97.

## PATTERNS PERFECT FOR MUSe



Hover your phone camera over the QR code to download the free digital pattern for *Do the Twist Socks*!



DO THE TWIST SOCKS 55946 - Knit in Muse Hand Painted Sock Yarn. Yarn cost starts at \$15.99.



COLOR SHIFTING SHAWL 55970 - Knit in Muse Hand Painted Sock Yarn. Yarn cost starts at \$79.95.

# TWILL

**Your favorite 3-ply twist yarn  
now in fingering weight!**

Twill is everything you'd want in a yarn: it's bouncy, versatile, and luxuriously soft—it blocks beautifully too! The 3-ply twist and satisfying density of this 100% Merino wool yarn results in absolutely gorgeous stitch definition, making both intricate cables and straightforward stockinette shine. We've included some of our favorite patterns that we think would be beautiful in Twill.

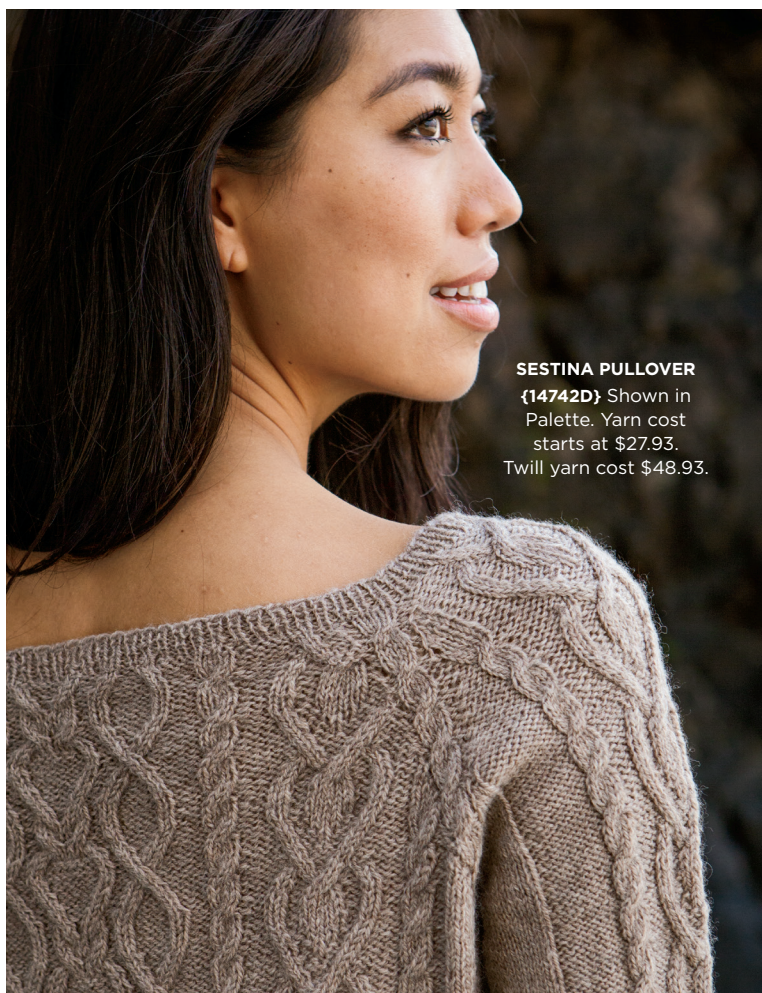
**Fingering & Worsted** | 100% Superwash Merino Wool. Fingering: \$6.99/50g ball - 183 yds. Worsted: \$12.99/100g hank - 149 yds. Shown, from top left: Crabapple 28531, Black Cherry Heather 28530, Serpent Heather 28525, Voyage Heather 28524, and Patchwork Heather 28526. Second row, from left: Merlin 28532, Graphite Heather 28529, Sea Salt Heather 28523, Horchata Heather 28528, and Rose Water Heather 28528



**ANDEAN CHULLO HAT**  
{50979D} Shown in  
Palette. Yarn cost \$35.91.  
Twill yarn cost \$62.91.



**SESTINA PULLOVER**  
{14742D} Shown in  
Palette. Yarn cost  
starts at \$27.93.  
Twill yarn cost \$48.93.





**THE PURL THIEF**  
**{52628D}** Shown in  
 Capretta Superwash.  
 Yarn cost \$26.97.  
 Twill yarn cost \$20.97.



**SORREL {14824D}**  
 Shown in  
 Hawthorne & Aloft.  
 Yarn cost starts  
 at \$77.93. Twill &  
 Aloft yarn cost  
 \$70.91.



**Cashmere, universally renowned for having the softest hand of any fiber, is the finest choice for creating beautiful, sophisticated garments and accessories.**

Our Capra & Capretta Superwash yarns combine a blend of fine merino wool with cashmere, resulting in a yarn that is as pleasurable to knit with as it is to wear. Capra is available in a DK weight and is perfect for garments & accessories intended to be worn next to the skin. For finer-gauge knits like socks and shawls, try our cushiony-soft Capretta Superwash. This fingering weight yarn, with its blend of merino and cashmere together with a touch of nylon for strength, is sure to spark love at first stitch. With the added perk of being machine-washable, Capretta is perfect for those special items that you will want to wear all year long.

## CAPRETTA

**OUR MOST LAVISH MACHINE WASHABLE YARN,  
WITH A TOUCH OF CASHMERE.**

A classic super soft drape of cashmere and merino combined with machine washable convenience makes it easier than ever to bring a touch of luxury to your everyday projects. Colors ranging from soft pastels to deep jewel tones in both heathers or solids means that you'll find the perfect shade for your next project. Recommended for lightweight cardigans, elegant socks, and soft accessories.

**Fingering** | 80% Fine Superwash Merino Wool, 10% Cashmere, 10% Nylon. \$8.99/50g ball - 230 yds. Shown, from top, left: Embers Heather 27647, Tansy Heather 27638, Hemlock Heather 27640, Adriatic Heather 27645, Meridian Heather 27637, and Angelite Heather 27642.

## CAPRA

**A LUSH AND WARM MERINO  
AND CASHMERE YARN.**

An elegant merino and cashmere wool yarn that is a soft luxury. Capra is a perfect weight for garments intended to be worn next to the skin, or your cold weather accessories. Hand washed, Capra blooms beautifully. You won't be able to keep your hands off of your Capra knits. Recommended for cozy shawls, luxurious accessories, and super soft sweaters.

**DK** | 85% Fine Merino Wool, 15% Cashmere. \$9.99/50g ball - 123 yds. Shown, from bottom, left: Embers Heather 27670, Tansy Heather 27661, Hemlock Heather 27663, Adriatic Heather 27668, Meridian Heather 27660, and Angelite Heather 27665.





**REJILLA SHAWL  
LIGHT {52846D}**  
Knit in Capretta.  
Yarn cost \$71.92.



**TELECOMMUTER  
SOCKS {52685D}**  
Knit in Capretta.  
Yarn cost starts  
at \$17.98.



**BREANNE BRIOCHE PULLOVER  
{52749D}** Knit in Capra. Yarn cost  
starts at \$119.88.



**KARENIA  
SHAWLETTE  
{56108}** Knit in  
Capra.  
Yarn cost starts  
at \$29.97.



**VOYAGE  
INFINITY SCARF  
{56097}** Knit in  
Capra. Yarn cost  
starts at \$49.95.

# COLOR SPLASH

Everything you need for knitting on the go! Stay hydrated with sassy water bottles and ultra organized with our classic needle cases.

A. SHOW OF HANDS PAPERCRAFT TOTE BAG 84413 \$29.99 | B. TWILL Twister 27929, Graphite Heather 27927, Dungaree 27931, Serpent Heather 28535 - \$2.99/100g hank | C. INTERCHANGEABLE NEEDLE CASE - DARK ASH 84277- \$14.99 | D. SUNSTRUCK OPTIONS INTERCHANGEABLE NEEDLE TIPS starts at \$5.49 | E. ZIPPERED POUCH- STONE & INK 84288 - \$8.99



Hover your phone camera over the QR code to download the free digital pattern!



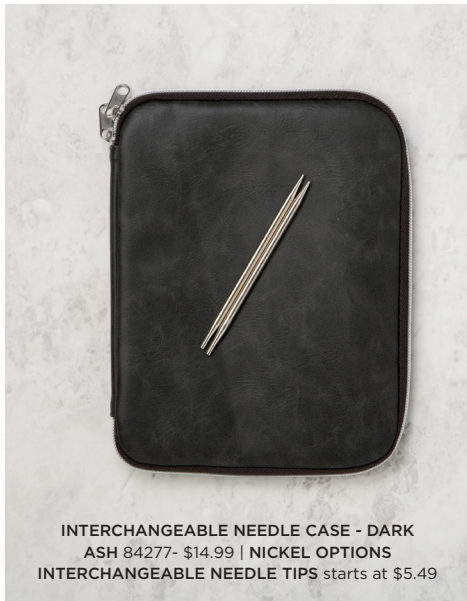
**FOURSQUARE MAJESTIC OPTIONS**  
INTERCHANGEABLE CIRCULAR SET 91404 - \$55.99



**WOOL ENEMY #1 ZIPPER POUCH** 84445 - \$7.99  
**FOLDABLE SCISSORS** 80626 - \$11.99



**ZIPPERED POUCH - STONE & INK** 84288 - \$8.99  
**MAKE WEAR MEND GOLD ENAMEL PIN** 84193 - \$11.99



**INTERCHANGEABLE NEEDLE CASE - DARK**  
ASH 84277- \$14.99 | **NICKEL OPTIONS**  
**INTERCHANGEABLE NEEDLE TIPS** starts at \$5.49



**BLACK MANGO WOOD**  
**YARN BOWL** 83338 - \$24.99  
| **SUNSTRUCK OPTIONS**  
**INTERCHANGEABLE NEEDLE**  
**TIPS** starts at \$5.09



**WOOL ENEMY NUMBER ONE - PROJECT BAG**  
84291 - \$7.99



**PURR PARTY TOTE BAG** 84141 - \$14.00  
**PURR PARTY WATER BOTTLE** 84142 - \$25.00



**YARN SWIFT - ONYX** 83651 - \$59.99  
**YARN SWIFT CASE - SILVER** 84019 - \$19.99



**GLOSS FINGERING** Navy 27018, River Rock 28598, and Wharf 28596. \$7.99/50g hank

# studio ESSENTIALS

A. YARN SWIFT, ONYX - 83651 \$59.99 B. YARN BALL WINDER - 82500 \$19.99 C. KNIT PICKS METALLIC STITCH MARKER, SMALL 45 PK WITH TIN - 83924 \$6.99 D. SUNSTRUCK STRAIGHT NEEDLES - 90704 \$49.99 E. BLACK MANGO WOOD YARN BOWL - 83338 \$24.99



## WOOL WASH

**Pamper your finished projects, revitalize sagging stitches, and gently clean your most well-worn garments for luscious, finished woolens!**

**SOAK** Fresh floral scents to revitalize your fibers. *Pineapple Grove* (83279), *Fig* (82200), *Lacey* (81185), *Scentless* (80928), *Celebration* (80929). 12oz, \$16.00

**KOOKABURRA** Lanolin combined with Australian Tea Tree Oil minimizes dust mites for a deep clean. 16oz, \$11.99 (80181) and 2oz \$2.79 (80182). Also available in *Delicate*. 16oz, \$11.99 (80341) and 2oz \$2.79 (80340)

**EUCALAN** Lanolin-enriched concentrate restores wool's original softness. *Original/Eucalyptus* (80154), *Lavender* (82752), *Grapefruit* (82753), *Unscented* (82754), *Wrapture Jasmine* (82755) 16.9oz, \$13.00. Available online in: 3.3oz, \$5.00 - .17oz, \$1.00.

**SHOWN IN A SHALLOW BLOCKING BASIN IN BLUE** (83496, \$12.99)



## NO MORE PESKY PILLS

**Keep your knits in tip-top shape, with pill removers—perfect for your well loved, and well-worn projects.**

**SAVE OUR SWEATERS BRUSH** Like a magic wand of nylon bristles, the Save Our Sweaters Brush elevates your beloved sweater out of the donation pile and back into your wardrobe. 81772, \$12.95

**KNIT PICKS LINT SHAVER** Simply turn on the lint shaver, and run it over the surface of your sweater. Any extra lint or pills are collected in the lint trap, which can be easily emptied when you are done. 80635, \$3.99



## CLASSIC YARN BOWLS

Our stashes may shift over time, but some tools are timeless! Useful and lovely, these bowls are the perfect addition to any craft room and are the best way to wrangle roll-away skeins. Simply loop the tail of your yarn through the spiral and your yarn will smoothly unwind as you need it!



MAPLEWOOD  
83356 - \$24.99

BLACK MANGO WOOD  
83338 - \$24.99

DARK BROWN MANGO  
WOOD  
83218 - \$24.99

ROSEWOOD  
83220 - \$19.99

TWO TONE BLACK  
MAPLEWOOD  
84309 - \$24.99

## PREMIUM BLOCKING MATS

Our premium mats are extra thick to make pinning your projects easier. One side features a textured surface, offering extra grip for easier shaping. The other side has a printed 1" grid to guarantee straight edges, square corners, and the correct size every time. Each set of nine 12" square mats comes in a clear, zippered carrying case with handles for easy storage and travel, and it also includes 100 T pins!



PREMIUM BLOCKING MATS  
83786 - \$34.99



*Knit Picks Enamel Stitch  
Markers - Rainbow 83927  
\$6.99*



*Stroll in Strawberry 28179,  
Pumpkin 23699, Dandelion  
25024, Peapod 25026, and  
Electric Blue 26406.*

**Fingering** | 75% Fine Superwash  
Merino Wool, 25% Nylon.  
\$5.99/50g ball - 231 yds.



*I Made This -  
Enamel Pin 84191  
\$7.99*



*Make Wear Mend  
- Enamel Pin  
84192 \$7.99*



*Yarn Hank -  
Enamel Pin 84194  
\$7.99*



Prism Aluminum Options  
Interchangeable Circular Set  
(US 4-11) 91461 \$59.99



Succulents - Stitch Markers  
84688 \$14.99

# KNIT THE RAINBOW

**For guaranteed smiles, add a healthy dose of Roy G. Biv to your accessories collection.**

Colorful markers, needles, cases, and more will make even the most stubborn of W.I.P.s a cause for cheer!



**WOOD YARN SPINDLE**  
{83970} \$24.99



**I CAN MAKE THAT - PROJECT BAG**  
{84290} \$7.99



**INTERCHANGEABLE EMBOSSED NEEDLE CASE - SUNSTRUCK** {83646} \$19.99



**DPN CASE - TEAL** {84021} \$12.99



**LLAMARAMA WATER BOTTLE**  
{84419} \$27.99



**"DON'T FORGET" - STICKY NOTE PAD**  
{84976} \$2.99

# Color Curated PALETTE BOXES

Instant colorwork in a box! Our beloved fingering weight wool comes in color curated sets! Use together in a single project for sweeping tonal gradients, or buy all three boxes to get the full rainbow of 150 colors. Boxes include 50 colors (no repeats!) in 20 gram mini skeins.

Buy all three boxes (46887) for \$224.97 to save 25% and make this FREE sampler blanket pattern!  
**ULTIMATE KNIT PALETTE BLANKET 55756**



PALETTE BOX - SUNRISE AND SUNSET  
{46718} \$99.99



PALETTE BOX - MOUNTAIN AND DESERT  
{46717} \$99.99



PALETTE BOX - FOREST AND OCEAN  
{46716} \$99.99

# YARN VALUE PACKS

Make more for less with our yarn value packs. We curated packs of our favorite yarns with suggested patterns so you can save up to 25%.

**NEUTRAL - STROLL TWEED VALUE PACK 46958**  
\$55.90 *save 20%*

*With one Stroll Tweed Value Pack, you can make the Timberline Mittens and a Tam O'Shanter hat!*



TAM O'SHANTER  
PATTERN {50591D}



TIMBERLINE MITTENS  
{52561D}



*We took the worrying out of planning the colors of your 15th Street Wrap knit in Wool of the Andes Superwash Bulky so you can jump right in and knit your next favorite accessory.*



**15TH STREET WRAP VALUE PACK 44502**  
\$63.68 *save 25%*

**15TH STREET WRAP**  
{55967}





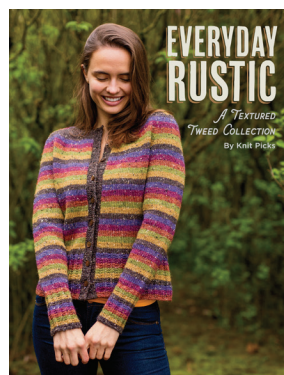
**BEST OF KNIT PICKS:  
PULLOVERS & CARDIGANS**  
33701 - \$27.99  
*save 20%*



## KNIT PICKS EXCLUSIVE BOOKS

Every collection is  
thoughtfully curated,  
designed, and tested for you!

For an error free knitting experience, every  
pattern is thoroughly tested, includes clear  
charts and detailed schematics, and our  
newer books have an in-depth glossary of  
terms and techniques.



**EVERYDAY RUSTIC:**  
A TEXTURED TWEED  
COLLECTION  
33708 - \$23.99  
*save 20%*



**CHALET: CABLED SWEATERS**  
33862 - \$23.99  
*save 20%*



**SPLENDID SOLES:** COLORFULLY  
COORDINATED SOCK PATTERNS  
33531 - \$23.99  
*save 20%*



**SPECTRUM:** A COLORWORK  
COLLECTION IN PALETTE  
33720 - \$23.99  
*save 20%*



**CUTE & COZY STASHBUSTERS:**  
STASHBUSTING ACCESSORIES  
33542 - \$23.99  
*save 20%*



**CABLE COUTURE:** MODERN  
CABLE-KNIT SWEATERS  
33539 - \$23.99  
*save 20%*



**WINDFALL:** BULKY KNITS  
FOR COZY DAYS  
33858 - \$23.99  
*save 20%*



**ENTWINED:** CELTIC CABLES  
COLLECTION  
33760 - \$23.99  
*save 20%*



# WAVES OF COLOR

**Whether you love the waves of color  
in our laminated birch needles or  
the slick surface of nickel, we have  
everything you need to knit happy!**

With hundreds of variations at your fingertips, you can swiftly create the perfect needle for any project using our Options Interchangeable tips and cables. Buy pieces individually, or save when you purchase a full interchangeable set.


**Cocobolo** Add an elegance to your needle collection with our Cocobolo Options Interchangeable needle tips. The rich, warm hardwood of our newest needle colorway pairs exquisitely with our black cables. This material makes superb knitting needles, providing a naturally warm hand, smooth surface, and exceptional strength. Equal parts magnificent and resilient, you'll be knitting in superior style for years to come!

**Available in 13 sizes** | Starts at \$7.99.

If **laminated birch needles** are your style, we have 5 vibrant colorways to choose from. The smooth, burnished surface of our wood needles are perfectly balanced with just the right amount of grip, which works wonders for working with slick fibers like mohair, silk, and angora. Plus birch wood is one of the most sustainable wood species. This makes our needles an easy choice when adding to your tool collection!

**Available in 5 colorways and 13 sizes**

Shown, from top left: Cocobolo, Sunstruck, and Caspian.  
Shown, from top right: Rainbow, Majestic, and Radiant, starts at \$5.99.



Our **nickel-plated needles** have a slick, glass-like surface which allows your stitches to move freely, while the hollow brass tube is extremely lightweight for hours of comfortable knitting.

Available in 13 sizes | starts at \$5.49.

Add a splash of color to your knitting with **Prism Needles**! Our lightweight aluminum needles feature the same sharp points, flexible cables, and smooth joins as our other Options Interchangeable needles. Aluminum metal warms to your hands as you knit, and the slick metal surface allows stitches to slide off with ease.

Available in a complete set | {91461} \$59.99

# WE'RE HERE TO HELP YOU DO WHAT YOU DO BEST: *CREATE*

**Creating the best projects means not only having access to the best materials at the best prices, but the best tools as well.**

Here at Knit Picks, we work with manufacturers and sell directly to you, offering great tools at amazing prices. And because we're knitters too, we strive to bring you needles we're as excited to use as we are to sell.



**Interchangeable Circulars** The foundation of the modern knitter's toolbox. Detachable needle tips and cables interchange to form a wide range of gauges and lengths on demand.

Available in 7 colorways and 13 sizes | Shown left in Majestic, starts at \$5.99.

**Foursquare Tips** They're a little different and a lot of fun! We took the same smooth, laminated birch of our popular Majestic needles and squared them. The slightly rounded corners provide a comfortable extra grip for your fingers and yarn, helping to keep your hands limber and your stitches even. We love these needles for beginner or "tight" knitters as their unique shape helps keep stitches loose and even.

Shown below. Tips start at \$4.99. Interchangeable set {91404} \$55.99.



## **Short Interchangeables**

Shorter tips and special length cables designed to make smaller circumference projects—like hats and sleeves—easier to manage.

Available in 4 colorways and 7 sizes | Shown in Foursquare, starts at \$5.49.





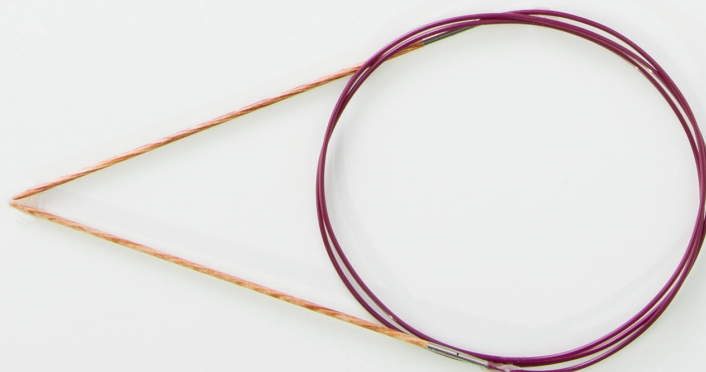
**Straight Needles** These ARE your grandmother's needles. Elegant and simple, tried and true. For basic flat knitting, sometimes the classic methods are the best.

Available in 3 colorways and 25 sizes | Shown in Sunstruck, starts at \$4.69.



**Double Pointed Needles** Featuring tapered points at both ends for a classic solution to circular knitting and especially small circumferences, like socks.

Available in 5 colorways and 35 sizes | Shown in Sunstruck, starts at \$5.09.



**Fixed Circulars** These needle tips are permanently connected to cables of specific length, which is especially useful in smaller gauge projects that don't accommodate Interchangeable needle construction.

Available in 5 colorways and 35 sizes | Shown in Sunstruck, starts at \$5.89.

# BIRCH

## A sustainable wood

Birch is known in the forest industry for the strength of its wood, its fine grain, and the beautiful ripple patterns that make it a prized veneer. Its unique growth properties make it a plentiful and cost-effective option for a wide variety of uses. Read on to learn why we love birch for sustainable knitting tools.



### Renewable Resource

Trees are a renewable resource, meaning they can be replenished as they are used by planting new trees.



### Low Carbon Footprint

The fast growing nature of Birch trees lowers the carbon footprint of harvesting them.



### Every Part is Usable

The entire birch tree is able to be used for various purposes. They are even able to be tapped for harvesting syrup.

### Fastest growing hardwood

Birch trees mature at twice the rate of similar hardwood trees. That means it takes half as many resources to grow the same amount of material.



# 2x

**Double the material** Birch can yield 2-3 times the amount of material in the same span as other hardwoods

### Durable

Birch is a hardwood that is extremely durable and strong, making it a great choice for long lasting tools.

### Beautiful

The fine grain and pale color make Birch an elegant wood that accepts stain well. Our bright needles are made with laminated layers of stained birch.

Our birch swift and tools offer timeless beauty and warmth with every stitch or smooth turn from skein to skein.

**SUNSTRUCK  
STRAIGHT NEEDLES**  
starting at \$4.69



**MAPLEWOOD YARN BOWL**  
{83356} \$19.99.



**BEE STITCH MARKERS**  
{83866} \$14.99.



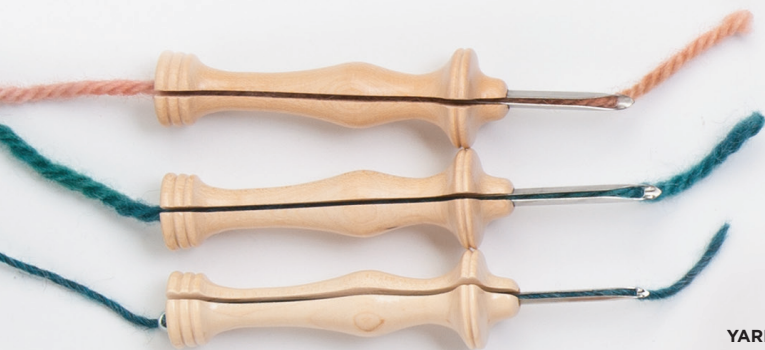
**SOCK STITCH MARKERS**  
{83863} \$14.99



**SHEEP KNITTING NEEDLE GAUGE**  
{84130} \$14.00



**KITCHENER MINI TOOL**  
{83851} \$8.99



**OXFORD PUNCH NEEDLES** Available in 8 sizes. \$39.00



**YARN SWIFT -  
BIRCH {82008}**  
\$49.99.

# LEARNING CENTER

**Cables: The combinations are limitless.**

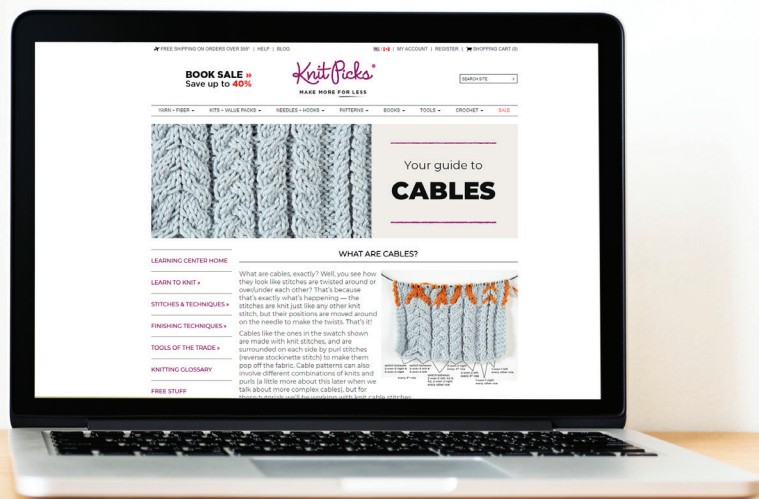
We admire them and, at times, may have felt daunted by them. If you've never tried them, have you wondered if you could knit a cable project? Could you ever create a piece with elegant twists and turns across the planes of your knit fabric? If you have pondered those questions, the answer is yes! Know that we're here to help you learn and make sure you have the supplies you need—yarn, needles, and everything in-between.

As with all knit fabric, cables are worked one stitch at a time, using knit and/or purl stitches. The key is learning to move a series of stitches onto a cable needle, which you then shift to the front or back of your knitting to guide the direction of the cable twist. The positioning of the cable needle and stitches to the front or back, plus the steps of knitting (or purling) stitches off the left-hand needle, followed by working the stitches off the cable needle, create the twist that forms each cable. Once you've learned the sequence of that first front or back ... you've created your first cable, and you're on your way!

If you are looking to tackle your first cable project—large or small—our *Traverse* collection patterns are the perfect place to start. They are timeless, beautiful projects that can make for great everyday wardrobe staples or special heirloom projects for a loved one. Our *Learning Center* will help you with step-by-step instructions to keep you moving forward in your project and with reading cable patterns, and our customer service team is ready to answer any questions you might have. Oh, and along with the patterns, we've included some of our favorite tools that might help you on your cabling journey.

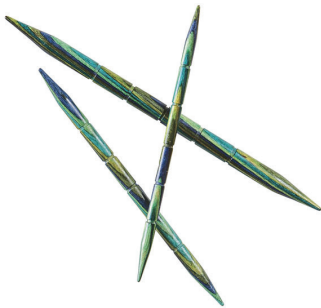


Hover your phone camera over the QR code to learn more about knitting cables on our Learning Center.



## *cable knitting* ESSENTIALS

From start to finish, every little detail counts,  
including the tools you use!



CASPIAN OPTIONS CABLE  
KNITTING NEEDLES  
91139 \$4.49



FINGER ROW COUNTER -  
WHITE 81731 \$3.95



CHIBI TAPESTRY NEEDLE SET  
BENT STYLE 82693 \$5.56



BASIC CHART KEEPER - TEAL  
84027 \$11.99



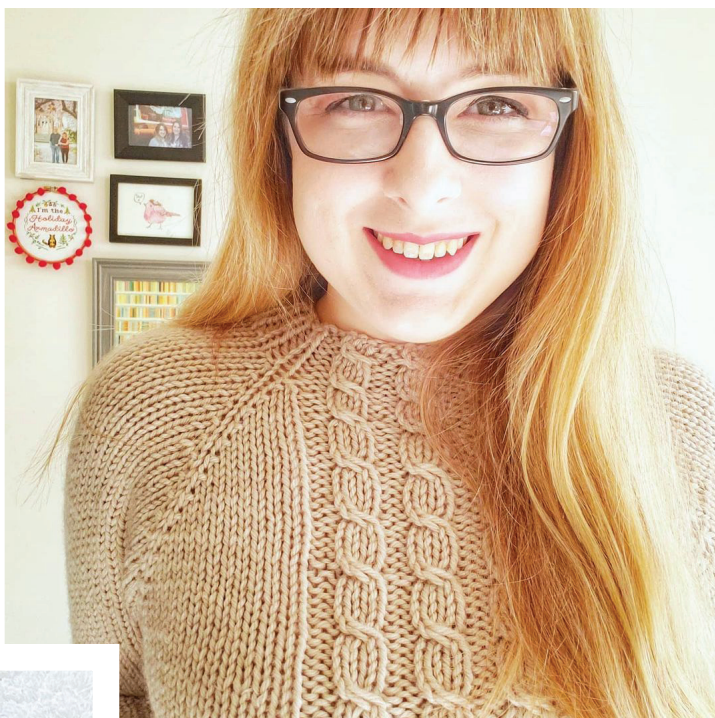
EMERGENCY FIX KEYCHAIN  
80632 \$1.99

### Classic CABLE BOOKS

- 6. **WOODSMOKE** - Edited by Knit Picks 33110  
\$19.99 *save 20%*
- 7. **CROSSINGS** - Edited by Knit Picks 33571  
\$23.99 *save 20%*
- 8. **WINDWARD** - Edited by Knit Picks 33386  
\$23.99 *save 20%*

# COMMUNITY KNIT PICS

We love seeing your beautiful makes! Whether you're digging out an old W.I.P. or starting a new project this winter, we'd love to see it. Follow us on Instagram @knit\_picks, and be sure to use the hashtag #communityknitpics for a chance to be featured!



@nicolespdesigns

Pattern: Grace by Bayron Handmade

Yarn: Swish Bulky in Nutmeg Heather {28629}



@cassie\_knits

Pattern: Seleste by Sari Nordlund

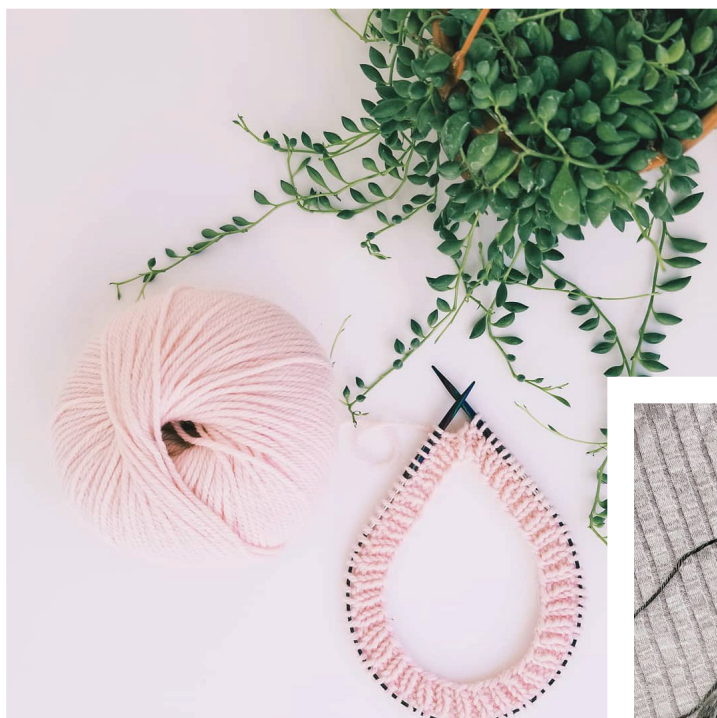
Yarn: Wool of the Andes Tweed in North Pole Heather {25964}



@kalurah

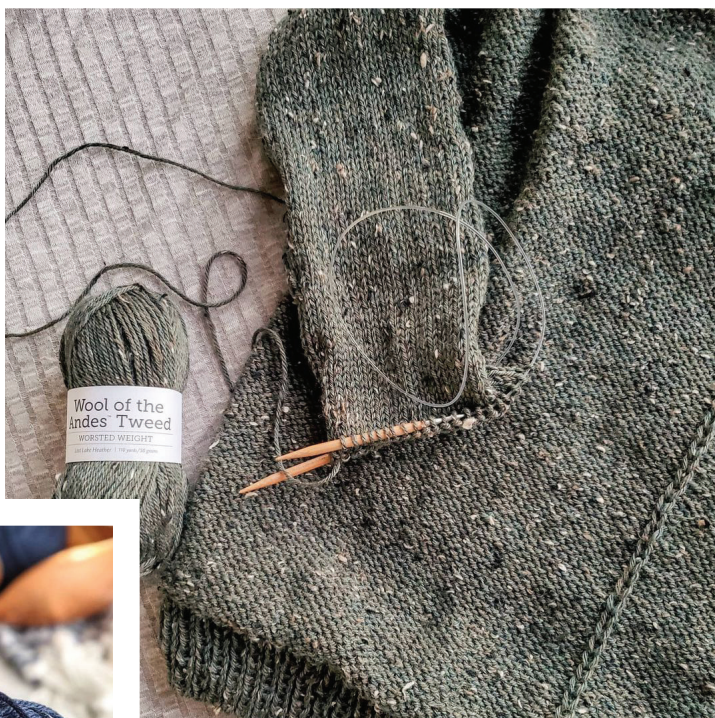
Pattern: Autumn Dreamer Socks by Kalurah Hudson

Yarn: Swish in Haystack Heather {28653}



@amandakait

Yarn: Capra in Blush {27657}



@abknitwear306

Pattern: Weekender Sweater by Drea Renee Knits

Yarn: Wool of the Andes Tweed in Lost Lake Heather {25447}



@bysincerelypam

Yarn: Swish in Delft Heather {24095}



WE'RE COMMITTED TO  
SUSTAINABLE YARNS DONE  
BEAUTIFULLY.



**Starting in 2021, many of our beloved yarns are now OEKO-TEX certified.**

This means that these yarns are produced without any harmful chemicals or substances. Safe for babies and kinder to our environment, these yarns have been tested and certified at either a Standard 100 or Standard 200.

You can read more about OEKO-TEX certified yarns and definitions on our website: [KnitPicks.com](https://www.knitpicks.com).

**Yarn families shown** | Simply Wool, Simply Alpaca, Dishie, Preciosa, Curio, Alpaca Cloud Fingering & Lace, and Palette.



*Hover your phone camera over the QR code to see the full selection of OEKO-TEX certified yarns.*





# BARE YARNS

**Perfect for that natural look or home dyeing, our versatile range of bare yarns is now that much bigger! With an even larger fiber selection than our full yarn lines, you're sure to find the exact fit for that unique custom project. With our Indie Dyer Discount, save up to 15% when you buy our bare yarns in packs of 20.**

*Shown from top: Bare Super Aristo 27611, Bare Surefoot Sock Yarn 27617, Simply Cotton Fingering 27613, Bare Lindy Chain 27619, Bare Rustic Wool 27610, and Bare Swish Fingering 27612.*



**Did you know that our bare yarns are not only easy to dye at home, but several are now OEKO-TEX certified as well? Learn more and see the full range of 60+ bare blends online at [www.KnitPicks.com/bare-dye-your-own](http://www.KnitPicks.com/bare-dye-your-own).**



Looking for Dye tutorials? Use your phone to read Lee's blog post about dyeing yarn using Kool Aid!

## THIS CATALOG IS ONLY THE BEGINNING...

**81** yarns, **1,806** colors, and **4,684** patterns  
are available at [KnitPicks.com](https://www.knitpicks.com)!

Our customer service team members are real crafters too! Have a question about a yarn, the way it feels, or the undertone of a particular color? Don't be shy! Seriously, we're here to make your fiber journey nothing short of amazing—we love to help crafters do what they do best: *create*.

Catalog expires 3/22/21 | 1.800.574.1323  
[customerservice@knitpicks.com](mailto:customerservice@knitpicks.com)  
M-F, 6am - 4pm PST



PO Box 87760  
Vancouver, WA 98687-7760

1 (800) 574-1323  
Fax 1 (360) 260-8877  
M - F 6AM - 4PM PT

Current Resident Or:

PRSRT STD  
U.S. Postage  
PAID  
Crafts Group

--	--

CUSTOMER NO.

SOURCE CODE

# SAVE 20%

**on an item of your choosing!**

Use the code **special20** to save 20% on one item to add to your stash—  
try out a new yarn or add a tool to your knitting studio

*Special20 promo ends 3/22/21. Promo applies to purchase of the highest priced item in your cart.  
Code can be used once per customer. Does not apply to items on sale. Conditions apply.*

CATALOG EXPIRES MARCH 22, 2021

