

**Submission Themes:** Knit Picks is looking for designs for a 6-8 pattern collection for winter 2015, featuring modern takes on Fair Isle. Knit Picks has chosen the colors and types of projects for this collection - please see our mood board at for the full list. This particular collection is for knit items only.

**Deadline:** March 30, 2014

**Compensation/Support:** \$100-\$400 (depending on design) exclusive fee for 12 months. While Knit Picks will knit the final samples, KP will provide yarn support for designer to knit their own version of the pattern. Knit Picks will also photograph all samples & designer will also be able to use photographs for their own promotions. Knit Picks will provide tech edit and final pattern layout. Patterns will be printed in a physical book as well as an eBook and single pattern downloads. After 12 months of the pattern being for sale on knitpicks.com, designers may sell the completed pattern in the IDP program, on Ravelry or anywhere else.

**Submission Requirements:** 1 page submission page, complete with detailed pattern information, sketch/swatch of design (swatches do not need to be in suggested yarn, we just want an idea of your design), sizes included, and designer bio/ contact information. Patterns should not be previously published anywhere. Colors are listed on the mood board. Only submissions for the featuring the yarn lines listed will be accepted. **Please include all relevant information on 1 page, preferably a .pdf.**

**Send to:** Upload your submission to the [Collection Submissions](#) webpage. If you have more than one proposal, each submission will need to be uploaded separately.

**Brief Description:** A fresh and modern take on Fair Isle, these projects will show a progression of difficulty, from simple small accessories up to garments. A cheerful palette and an emphasis on accessibility, this collection should cheer up the worst winter doldrums. Projects we are looking for: women's cardigan, hat, mittens, hotpad/trivet centerpiece, square cushion, lavender sachets (set of 4). Only submissions using yarn choices on mood board will be accepted. Projects shown on the moodboard are for inspiration only. Patterns will be sold in collection as well as separately on the Knit Picks website, with marketing in our catalog, weekly emails, blog and other social media sites.

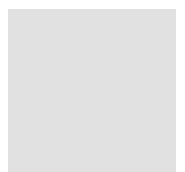
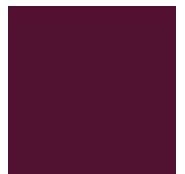
**Other Info:** Patterns will have a 12 month exclusivity on knitpicks.com, after that designers may sell the pattern where ever they wish. Similar to our IDP program, payments will be made electronically. For yarn support, designers must have a US or Canada address. Submissions will be accepted through March 30, 2014; designers will be notified of final decision by April 11th. Completed patterns will be due by May 23, 2014. Other relevant information may be found at the [IDP FAQs](#). Any other questions may be directed to [submissions@knitpicks.com](mailto:submissions@knitpicks.com).

# WN5 Fresh & Modern Colorwork Collection

A fresh and modern take on fair isle, these projects will show a progression of difficulty, from simple small accessories up to garments. A cheerful palette and an emphasis on accessibility, this collection should cheer up the worst winter doldrums.

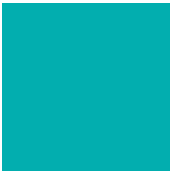
women's cardigan  
mittens  
square cushion

hats  
hotpad/trivet centerpiece  
lavender sachets (four motifs)







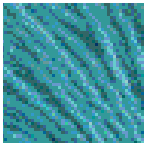


Palette

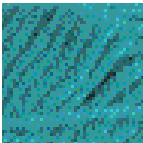
Wool of the Andes

Wool of the Andes Sport

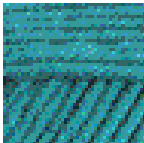
Wool of the Andes Tweed



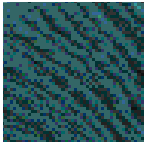
Caribbean



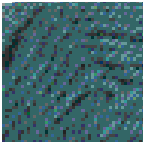
Marina



Marina



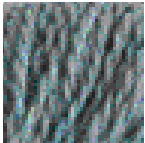
Spruce



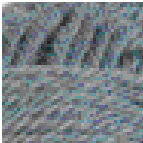
Spruce



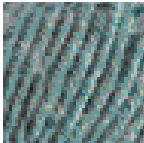
Midnight Heather



Opal Heather



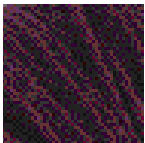
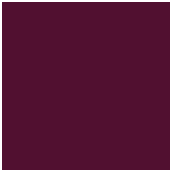
Opal Heather



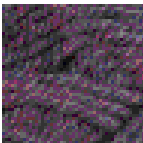
Thirst Heather



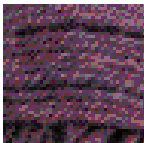
Thirst Heather



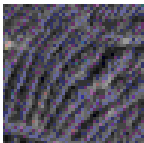
Regal



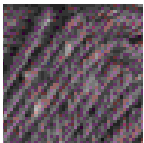
Claret Heather



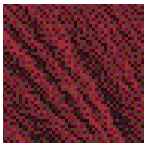
Claret Heather



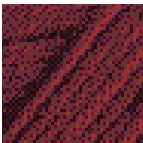
Indigo Heather



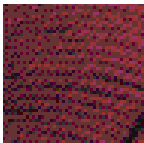
Claret Heather



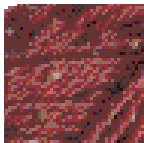
Hollyberry



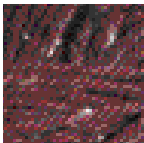
Hollyberry



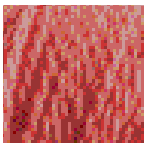
Hollyberry



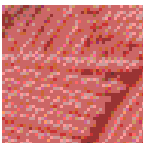
Firecracker Heather



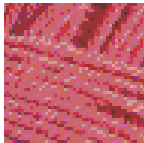
Garnet Heather



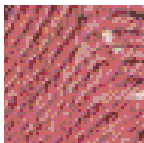
Rosehip



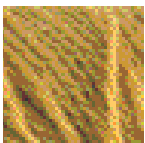
Conch



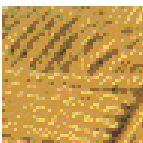
Papaya Heather



Papaya Heather



Tumeric



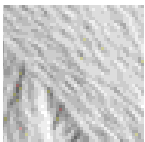
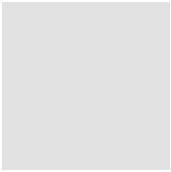
Tumeric



Tumeric



Brass Heather



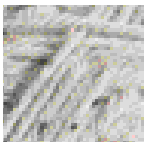
Finnley Heather



Dove Heather



Dove Heather



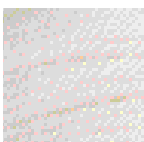
Down Heather



White



White



White



Oyster Heather